

"SOLO CON VERTE"

TRUMPET 1

COMP: HORACIO PALENCIA.
ARR: JUAN JOSE CONTRERAS.
MAR/2016

$\text{♩} = 60$

4

10 **A** 6 §

21 **B**

25 To CODA

30

33 D.S. AL CODA

37 TO CODA

"SOLO CON VERTE"

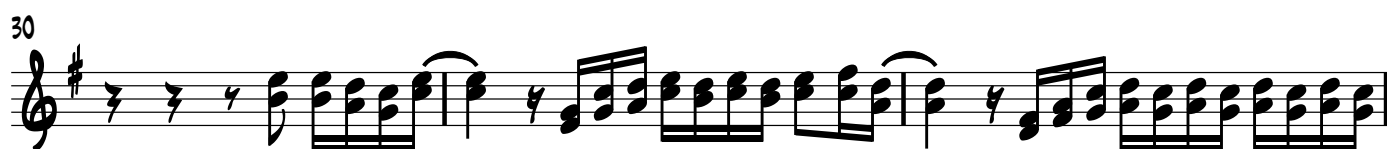
TRUMPET 2 AND 3

COMP: HORACIO PALENCIA.

ARR: JUAN JOSE CONTRERAS.

MAR/2016

$\text{♩} = 60$



VIOLIN 1

♩ = 60

37 TO CODA



VIOLIN 2

♩ = 60

37 TO CODA

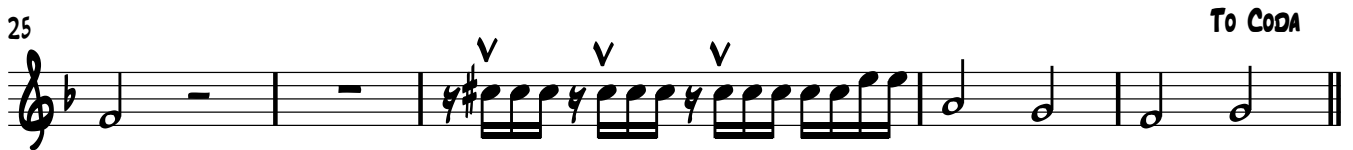
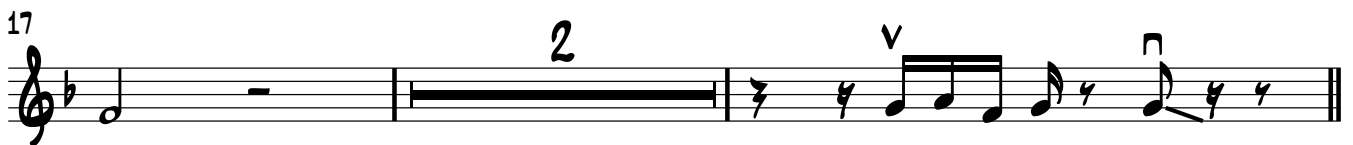
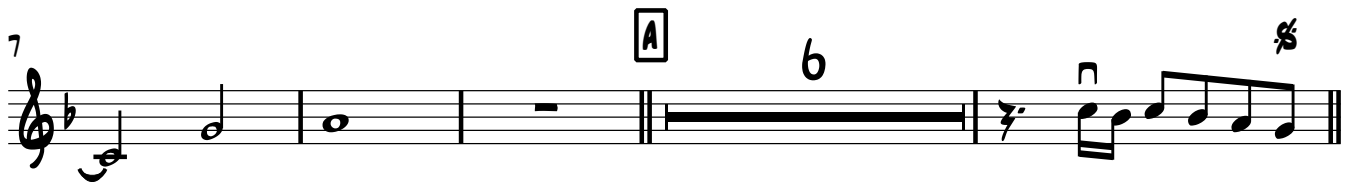


"SOLO CON VERTE"

VIOLIN 3

COMP: HORACIO PALENCIA.
ARR: JUAN JOSE CONTRERAS.
MAR/2016

$\text{♩} = 60$



TO CODA



D.S. AL CODA



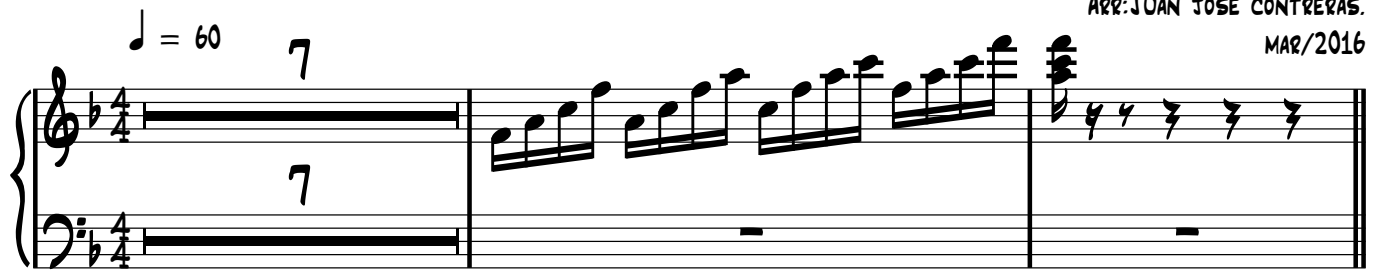
37 TO CODA

"SOLO CON VERTE"

HARP

COMP: HORACIO PALENCIA.
ARR: JUAN JOSE CONTRERAS.
MAR/2016

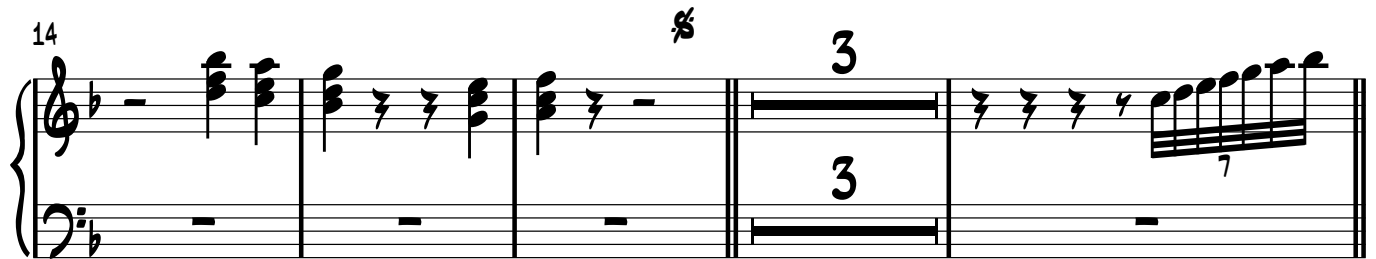
♩ = 60



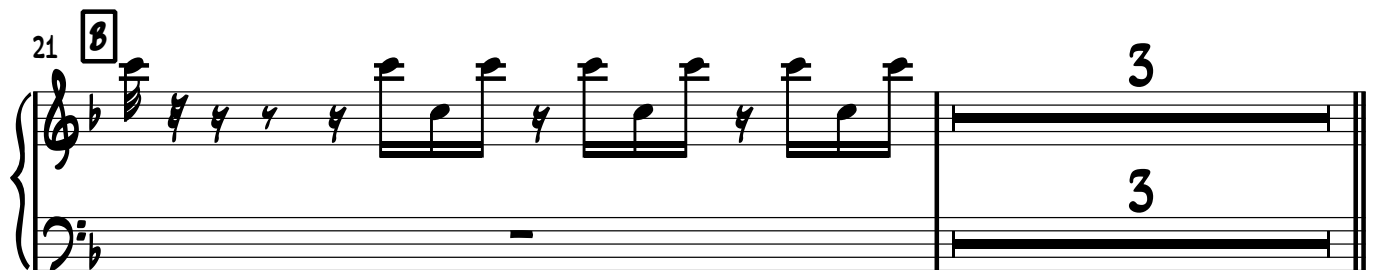
10 **A**



14



21 **B**

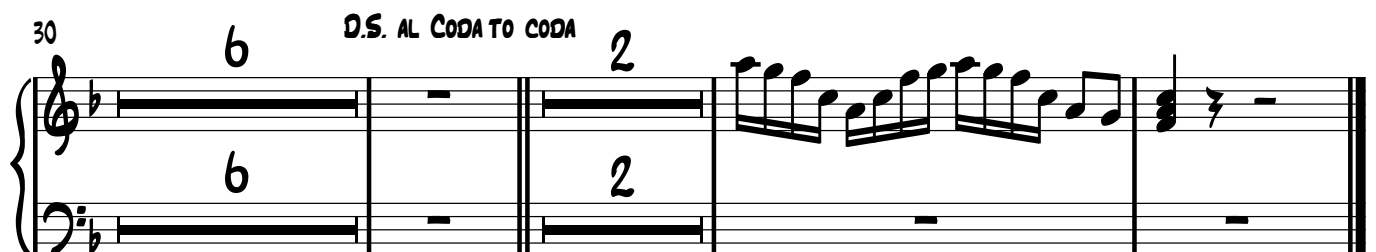


25



30

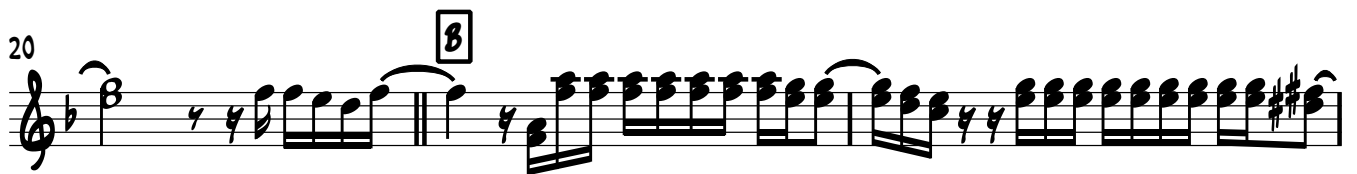
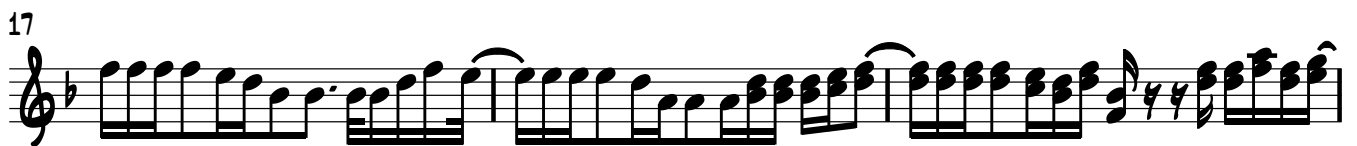
D.S. AL CODA TO CODA



"SOLO CON VERTE"

VOICE

COMP: HORACIO PALENCIA.
ARR: JUAN JOSE CONTRERAS.
MAR/2016



"SOLO CON VERTE"

VIH/GUIT

COMP: HORACIO PALENCIA.
ARR: JUAN JOSE CONTRERAS.
C#° MAR/2016

♩ = 60

5 **DM** **C** **Bb** **C7** **Gm7** **F**

9 **F** **A** **Bb** **BbMA7** **C** **C7** **F**

13 **F** **F7** **Bb** **AM** **Gm7** **C7** **F** **S**

17 **DM** **Bb** **C7** **F** **Bb** **AM** **Gm** **C7**

21 **Bb** **B** **BbMA7** **C** **C#°** **DM** **C**

25 **Bb** **BbMA7** **C** **C#°**

28 **DM** **C** **Bb** **C7 To CODA** **F** **F7** **Bb** **BbMA7**

32 **C** **C#°** **DM** **C** **Bb**

2

36

D.S. AL VMSWIT \times^F TO CODA

F

×



TO CODA

F7

38

C7

✕



"SOLO CON VERTE"

QUITARRÓN

COMP: HORACIO PALENCIA.
ARR: JUAN JOSE CONTRERAS.
MAR/2016

♩ = 60

