

Violin 2

Popurri Vicente

Arr. Lorenzo Lujan

El Ayudante

9

18

36

46

56

El Rey

67

75

83

90

llo-rar y llo-ra-r llo-rar y llo-ra-r

2

Popurri Vicente

100.

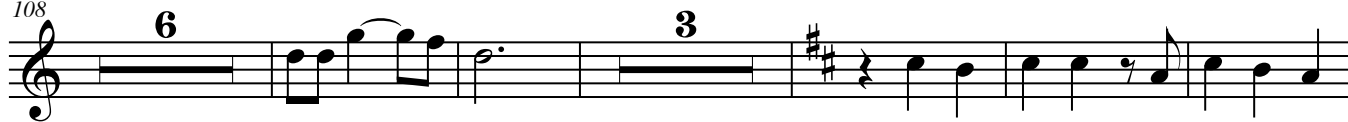


Las Botas De Charro

108

6

3



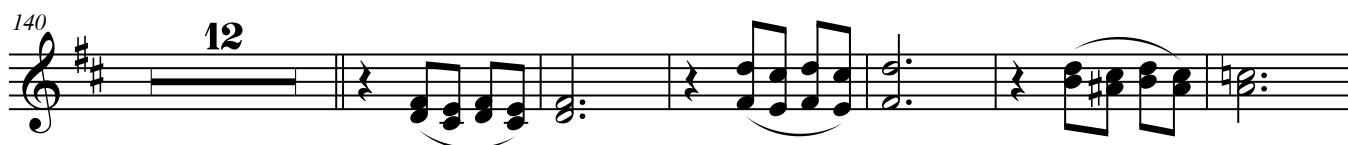
122

12



140

12

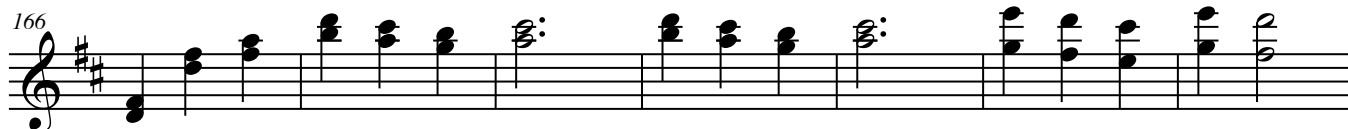


158

2



166

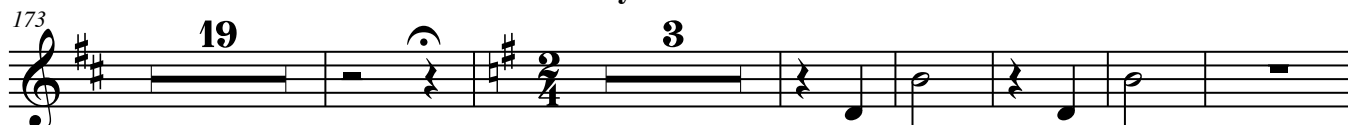


La Ley Del Monte

173.

19

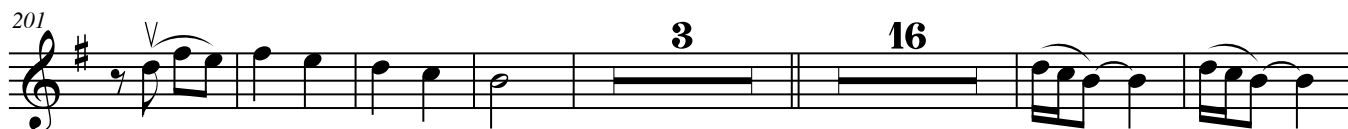
3



201.

3

16



226

2



235

2



245

3



Popurri Vicente

No Me Se Rajar

3

257

2

267

Measure 267: Treble clef, key signature of three sharps (F#, C#, G#). The melody consists of eighth and sixteenth notes, with some rests and a final quarter note.

[illegible]

294



21

323

338

Measure 338: Treble clef, key signature of three sharps (F#, C#, G#). The measure contains a complex rhythmic pattern starting with a quarter rest, followed by eighth and sixteenth notes, and ending with a quarter note.

La Estrella

346

This block contains measures 346 through 351 of the musical score. Measure 346 begins with a treble clef and a key signature of two sharps (F# and C#). The melody starts with a quarter note G4, followed by eighth notes A4 and B4, and then a quarter note C5. The accompaniment consists of eighth notes D4, E4, and F#4. Measure 347 continues the melody with a quarter note D5, followed by eighth notes E5 and F#5, and then a quarter note G5. The accompaniment continues with eighth notes G4, A4, and B4. Measure 348 starts with a quarter note A4, followed by eighth notes B4 and C5, and then a quarter note D5. The accompaniment continues with eighth notes C4, D4, and E4. Measure 349 begins with a quarter note E4, followed by eighth notes F#4 and G4, and then a quarter note A4. The accompaniment continues with eighth notes F#4, G4, and A4. Measure 350 starts with a quarter note B4, followed by eighth notes C5 and D5, and then a quarter note E5. The accompaniment continues with eighth notes B4, C5, and D5. Measure 351 ends with a quarter note F#5, followed by eighth notes G5 and A5, and then a quarter note B5. The accompaniment continues with eighth notes A5, B5, and C6.

352

352

358

Las Llaves De Mi Alma

This musical notation is for the song 'Las Llaves De Mi Alma'. It features a treble clef and a key signature of one sharp (F#). The melody is written on a single staff. The notation includes various musical symbols such as eighth notes, sixteenth notes, and rests. A double bar line with a '2' above it indicates a second ending. The title 'Las Llaves De Mi Alma' is written below the staff.

Las Llaves De Mi Alma

365

365

370

371

372

373

Popurri Vicente

379



Nos Estorba La Ropa

384



390



395



401



408



416



422



431



438



445





El Jaliscience

