

Trumpet 2

Popurri Vicente

Arr. Lorenzo Lujan

El Ayudante

Musical score for Trumpet 2, El Ayudante section. The score is written in 2/4 time and consists of 48 measures. The melody is in G major. The first staff (measures 1-8) starts with a treble clef and a key signature of one sharp (F#). The second staff (measures 9-16) continues the melody. The third staff (measures 17-21) features a double bar line and a repeat sign. The fourth staff (measures 22-31) continues the melody. The fifth staff (measures 32-47) features a double bar line and a repeat sign. The sixth staff (measures 48-48) ends the section.

El Rey

Musical score for Trumpet 2, El Rey section. The score is written in 3/4 time and consists of 91 measures. The melody is in G major. The first staff (measures 49-58) starts with a treble clef and a key signature of one sharp (F#). The second staff (measures 59-69) continues the melody. The third staff (measures 70-77) continues the melody. The fourth staff (measures 78-84) continues the melody. The fifth staff (measures 85-90) continues the melody. The sixth staff (measures 91-91) ends the section. The lyrics "llo-rar y llo-ra-r llo-rar y llo-ra-r" are written below the melody in the fifth staff.

2

Popurri Vicente

100



Las Botas De Charro

111



124



139



163



179



186



La Ley Del Monte

193



201



211



218

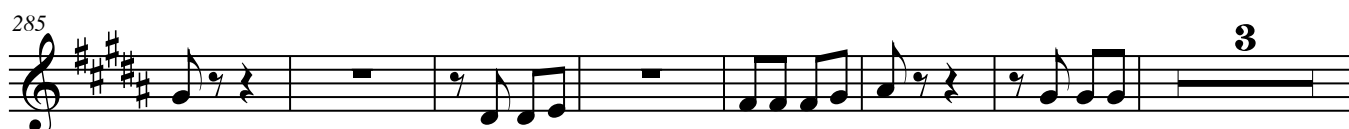
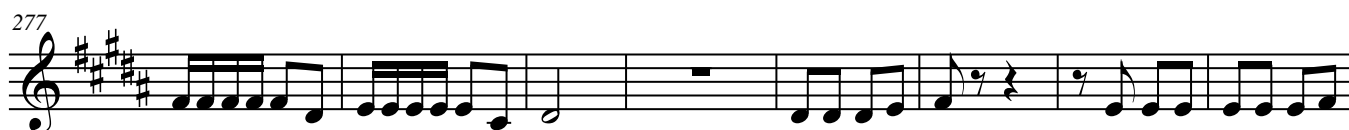


Popurri Vicente

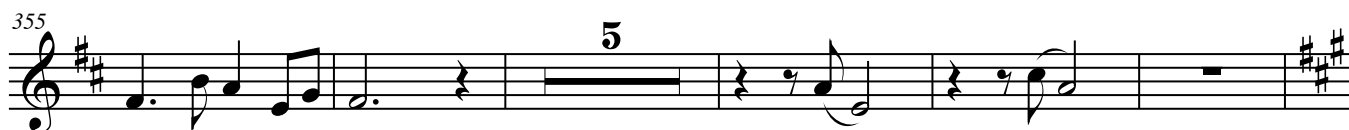
3



No Me Se Rajar



La Estrella



365

2

372

Nos Estorba La Ropa

[illegible]

394

394

400



406

11

[illegible]

440

6

p *mf*

451

6

p

463



Jaliscience

[illegible]

Popurri Vicente

5

