

Trumpet 2

Popurri Arriba Jalisco

Mariachi Vargas de Tecalitlan

3

6

11

20

27

32

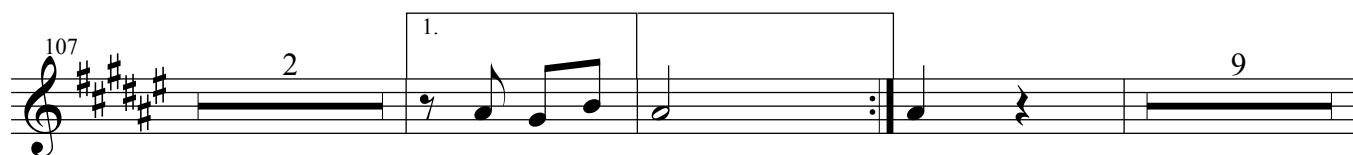
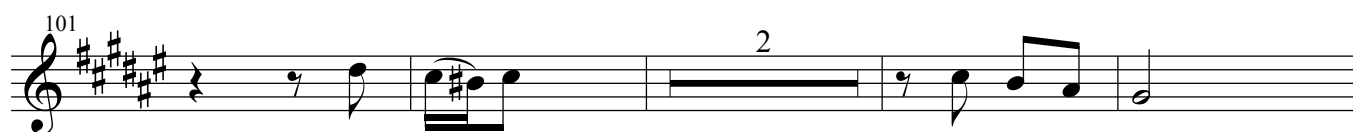
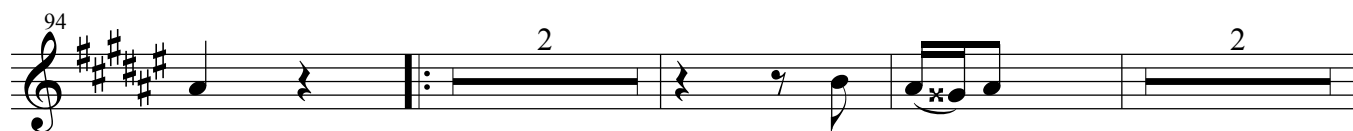
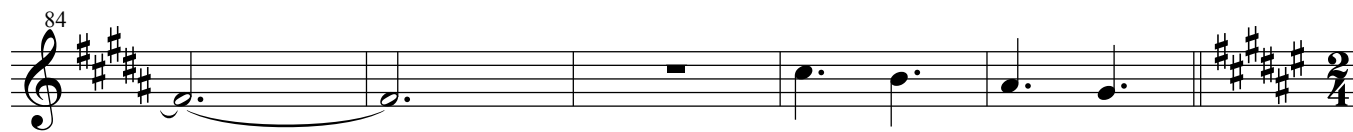
44

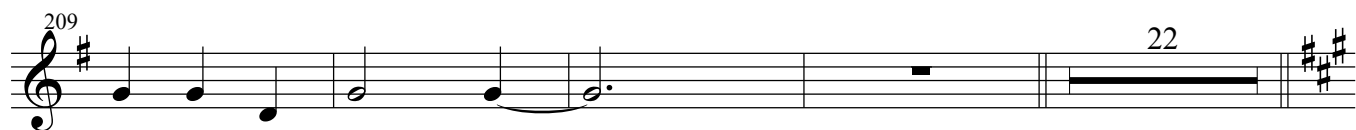
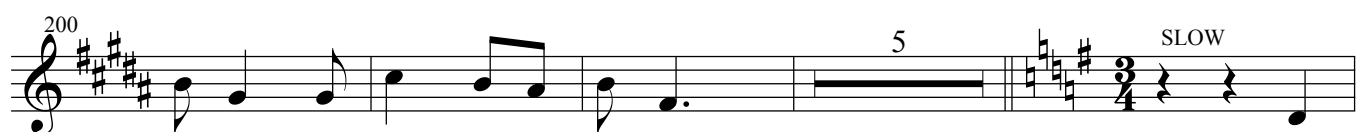
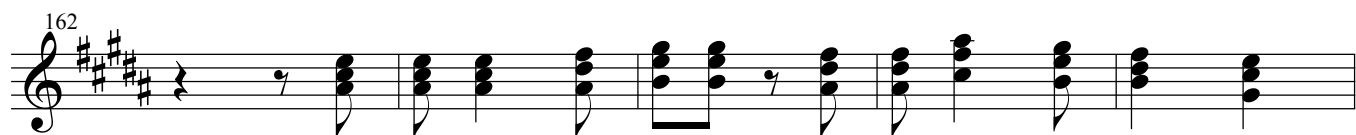
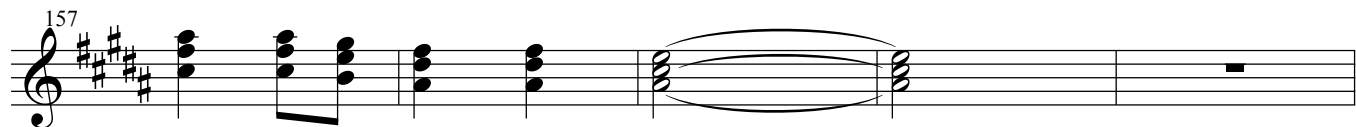
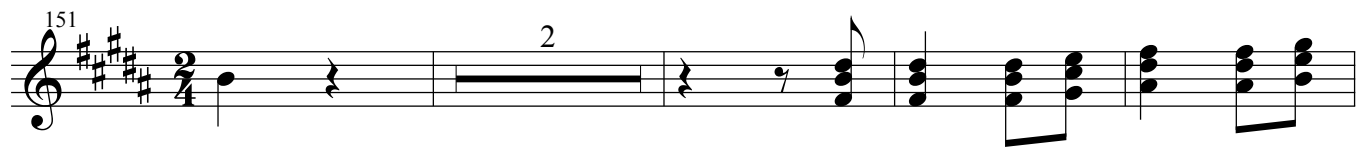
49

54

59

4





275

Example 10, measures 275-280. The score is in treble clef with a key signature of one sharp (F#). Measure 275 contains three quarter notes: F#4, G#4, and A4. Measure 276 contains a half note F#4, a quarter rest, a half note G#4, and a quarter rest. Measure 277 contains a half note A4, a quarter rest, a half note B4, and a quarter rest. Measure 278 contains a half note C5, a quarter rest, a half note B4, and a quarter rest. Measure 279 contains a half note A4, a quarter rest, a half note G#4, and a quarter rest. Measure 280 contains a half note F#4, a quarter rest, a half note E4, and a quarter rest.

303

The musical score for 'The Rose Tree' is written for a single melodic line on a treble clef staff. The key signature is three sharps (F#, C#, G#), and the time signature is 2/4. The piece begins with a treble clef, a key signature of three sharps, and a 2/4 time signature. The melody starts with a quarter rest, followed by a series of eighth and sixteenth notes, including some beamed sixteenth notes. There are two measures with a fermata over a dotted half note. The piece concludes with a final cadence consisting of a half note and a quarter note.

[illegible]

313

The musical score for 'The Rose Tree' is written on a single staff. It begins with a treble clef, a key signature of three sharps (F#, C#, G#), and a common time signature (C). The melody starts with a quarter note G#4, followed by a quarter note A4, and then a quarter note B4. These three notes are beamed together and have a slur above them. The melody then continues with a quarter note A4, a quarter note G#4, and a quarter note F#4. The piece ends with a double bar line.