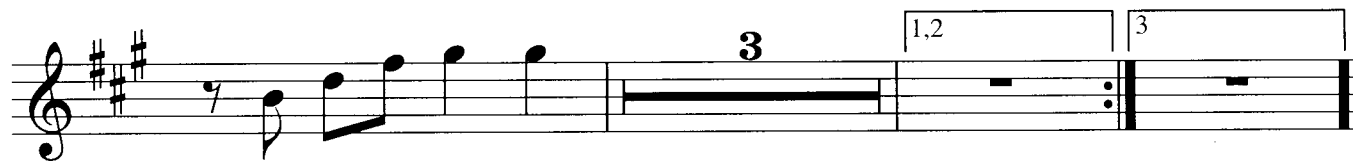
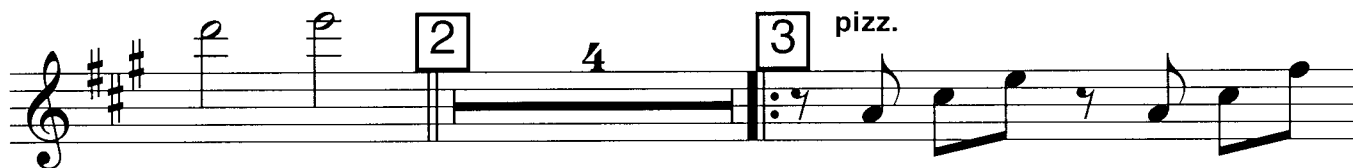


# Aleluya

Violin 1

Song #3/trans. L.G. Sobrino

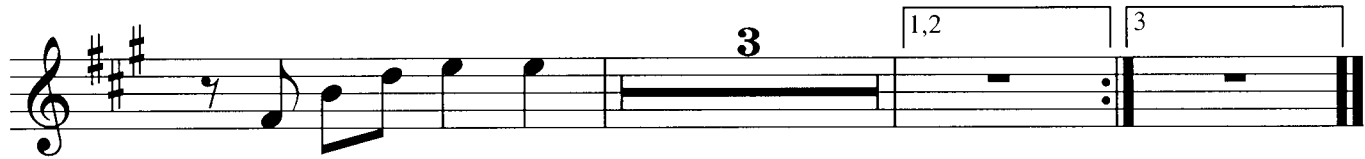
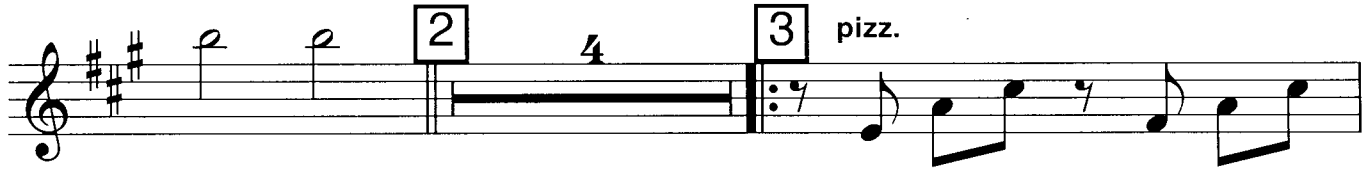
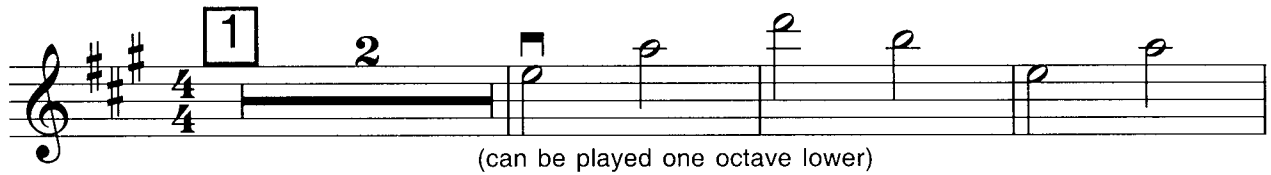


© 1997 Mariachi Publishing Company

# Aleluya

Violin 2

Song #3/trans. L.G. Sobrino



© 1997 Mariachi Publishing Company

# Aleluya

Violin 3

Song #3/trans. L.G. Sobrino

Violin 3 musical score for 'Aleluya'. The score is written in treble clef with a key signature of three sharps (F#, C#, G#) and a 4/4 time signature. The first staff begins with a measure containing a whole note G#4, marked with a box containing the number '1'. This is followed by a measure with a whole note A#4, marked with a '2'. The next measure contains a whole note B4, marked with a box containing the number '2'. The final measure of the first staff contains a whole note C5, marked with a box containing the number '1'. Below the first staff, the text '(can be played one octave lower)' is written. The second staff begins with a measure containing a whole note D5, marked with a box containing the number '2'. This is followed by a measure with a whole note E5, marked with a '4'. The next measure contains a whole note F#5, marked with a box containing the number '3'. The final measure of the second staff contains a whole note G#5, marked with a box containing the number '3' and the text 'pizz.'. The third staff begins with a measure containing a whole note A5, marked with a '7'. This is followed by a measure with a whole note B5, marked with a '7'. The next measure contains a whole note C6, marked with a '7'. The final measure of the third staff contains a whole note D6, marked with a '7'. The fourth staff begins with a measure containing a whole note E6, marked with a '7'. This is followed by a measure with a whole note F#6, marked with a '3'. The next measure contains a whole note G#6, marked with a box containing the numbers '1,2'. The final measure of the fourth staff contains a whole note A6, marked with a box containing the number '3'.

© 1997 Mariachi Publishing Company