

# La Bikina

Violin 1

Mariachi Tequila Brass de Rafael J. Camacho

Ruben Fuentes

$\text{♩} = 160$

5

12

**A**

20

34

**B**

43

50

**C**  $\%$

coros- - - - -

La Bi - ki - na

La Bi -

60

ki - na

7

4

4

2

*mp*

*coros*

*coros*

La Bikina - Violin 1

2

**D**

66

73

To Coda

80

**E**

87

93

**F**

107

**D.S. al Coda**

114

119

# La Bikina

Violin 2

Mariachi Tequila Brass de Rafael J. Camacho

Ruben Fuentes

Violin 2 musical score for 'La Bikina'. The score is written in 3/4 time and consists of 60 measures. It includes various musical notations such as eighth notes, quarter notes, half notes, and rests. There are also dynamic markings like *mp* and articulation marks like accents and slurs. The score is divided into sections labeled A, B, and C. Section A starts at measure 12 and ends at measure 19. Section B starts at measure 34 and ends at measure 42. Section C starts at measure 50 and ends at measure 60. The lyrics 'La Bi - ki - na' are written below the notes in measures 50-53 and 55-58.

5

12

A

20

34

B

43

50

C

coros-

La Bi - ki - na

La Bi -

60

ki - na

66 **D**

2

73

To Coda

80 **E**

87

93 **F**

8

107

D.S. al Coda

114

119

# La Bikina

Violin 3

Mariachi Tequila Brass de Rafael J. Camacho

Ruben Fuentes

5

*mp*

12

**A**

20

**B**

34

43

**C** 

50 *coros-*

La Bi - ki - na

60

ki - - na

2

4

7

4

4

2



# Trumpet 1

## La Bikina

Mariachi Tequila Brass de Rafael J. Camacho

Ruben Fuentes

6

11

A

2

18

2

4

*f*

28

34

B

6

4

4

C

*mp*

51

*f*

57

*mp*

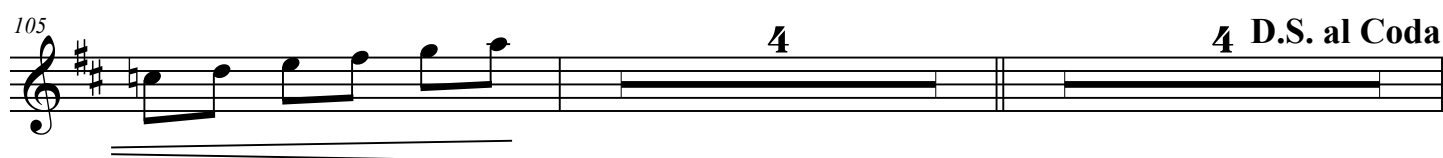
63

D

4

*f*

*mp*





# Trumpet 2

## La Bikina

Mariachi Tequila Brass de Rafael J. Camacho

Ruben Fuentes

Musical score for Trumpet 2, featuring a 3/4 time signature and a key signature of one sharp (F#). The score is divided into measures, with measure numbers 6, 11, 18, 28, 34, 51, 57, and 63 indicated. The score includes various musical notations such as rests, eighth notes, quarter notes, half notes, and beamed sixteenth notes. Dynamic markings include *f* (forte), *mp* (mezzo-piano), and *f* (forte). The score also includes section markers labeled A, B, C, and D, and a repeat sign. The key signature changes to two flats (Bb and Eb) starting at measure 51.

6

11

A

2

18

2

4

*f*

28

B<sub>34</sub>

6

4

4

C

*mp*

51

*f*

57

*mp*

63

D

4

*f*

*mp*

## La Bikina - Trumpet 2

72 **4** **To Coda**

81 **E** **15** **F** *mp* *f*

100

105 **4** **4** **D.S. al Coda**

114  $\emptyset$  **8** *f*

Detailed description of the musical score: The score is for a Trumpet 2 part. It begins at measure 72 with a 4-measure rest, followed by a melodic phrase leading to a 'To Coda' instruction. At measure 81, there is a 15-measure rest, then a box labeled 'E', followed by a melodic line starting with a mezzo-piano (mp) dynamic. At measure 91, there is a box labeled 'F', followed by a melodic line starting with a forte (f) dynamic. The third staff (measures 100-104) continues the melodic development. The fourth staff (measures 105-113) includes a 4-measure rest and a 'D.S. al Coda' instruction. The fifth staff (measures 114-118) starts with a measure rest symbol (empty circle with a cross), followed by an 8-measure rest, and ends with a melodic phrase starting with a forte (f) dynamic and an accent mark.

# Vihuela/Guitar

## La Bikina

Mariachi Tequila Brass de Rafael J. Camacho

Ruben Fuentes

Chords and notes for measures 1-54:

- Measures 1-5: C, B $\flat$ 7, C
- Measures 6-11: F, E7, A min7, B $\flat$ 9, C Maj7, A min7
- Measures 12-17: D min7, G+, C, C, A, C, B m7(b5)
- Measures 18-23: E7, A min7, G min7, C7, F
- Measures 24-29: E7, A min7, A min7, A min7, D7, A min7
- Measures 30-35: D7, D min7, G+, B, C
- Measures 36-41: B m7(b5), E7, A min7, G min7, C7
- Measures 42-47: F, E7, A min7, B $\flat$ 9, C Maj7, A min7, D min7, G+
- Measures 48-53: C, C, C, F min7, B $\flat$ 7, G min7, C min7
- Measures 54: F min7, B $\flat$ 7, E $\flat$ , F min7, B $\flat$ 7

60 G min7 C min7 D7 D min7 G7 G +

**D**

66 C B m7(b5) E7 A min7

72 G min7 C7 F E7 A min7 B<sup>b</sup>9

**To Coda**

78 C Maj7 A min7 D min7 G + C C **E** C

84 B m7(b5) E7 A min7 G min7 C7

90 F E7 A min7 D7

96 D min7 G7 **F** C B m7(b5) E7

102 A min7 G min7 C7 F E7

108 A min7 B<sup>b</sup>9 C Maj7 A min7 D min7 G + C C **D.S. al Coda**

114 C C Maj7 A min7 D min7 G + C

120 C Maj7 A min7 D min7 G + C

# Guitarron

# La Bikina

Mariachi Tequila Brass de Rafael J. Camacho

Ruben Fuentes

7

14 **A**

21

28 **B**

35

42

49 **C** §

56

63

**D**

70



77

To Coda

**E**

84



91

**F**

99



107

D.S. al Coda



114



119

