

"El Cihualteco"

Mariachi Cobre
S. Carrillo

Vargas / Fuentes

Guitarron

The musical score for the Guitarron part of "El Cihualteco" is written in bass clef with a key signature of one sharp (F#) and a 3/4 time signature. The score consists of nine staves, each containing four measures. The first staff begins with a measure rest marked with a '3' above it, indicating a triplet. The notation includes various note values (quarter, eighth, and sixteenth notes), rests, and accidentals. A repeat sign is placed at the end of the fifth staff. A box containing the letter 'A' is positioned below the eighth staff. The staves are numbered 7, 11, 15, 19, 23, 27, 31, 35, and 39 at the beginning of each line.

7

11

15

19

23

27

31

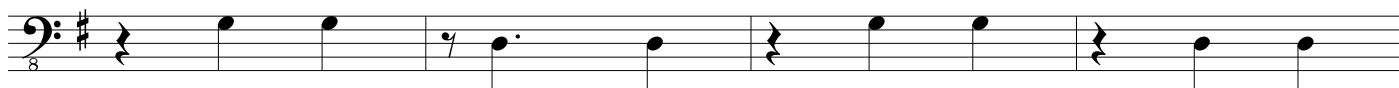
35

39

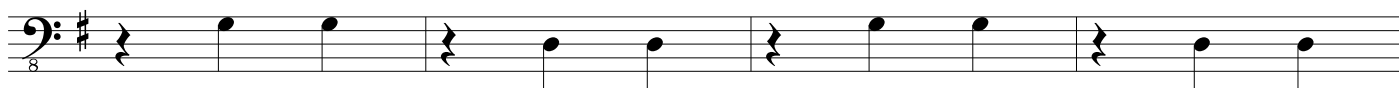
A

43

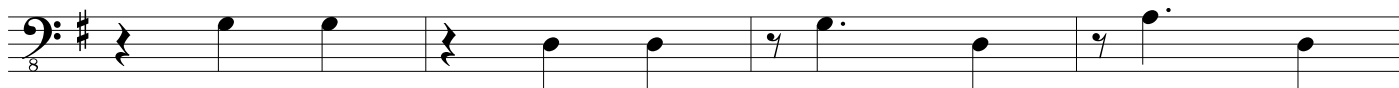
- 2 -



47



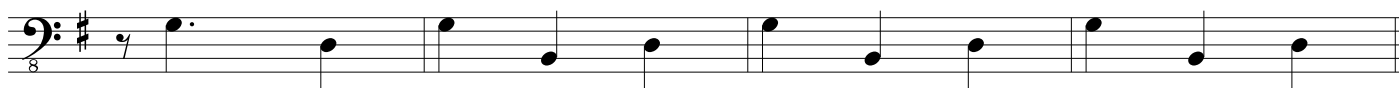
51



55

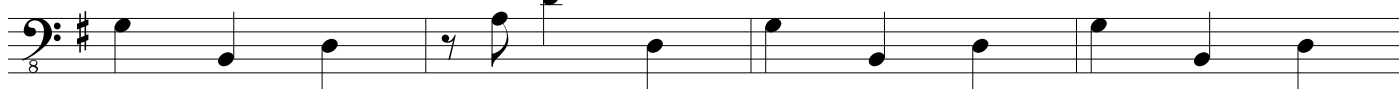
**B**

59

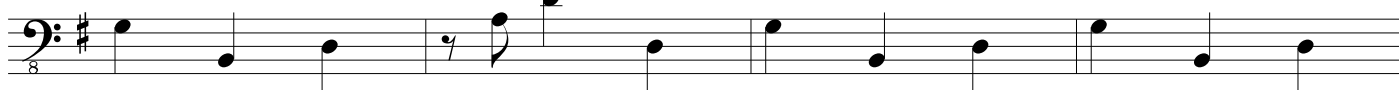


2X to Coda

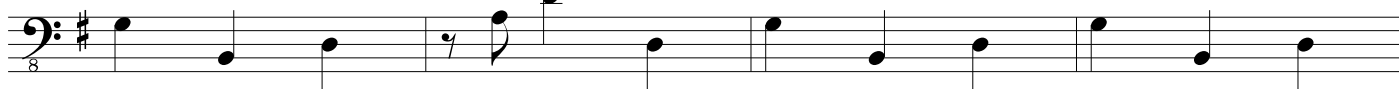
63



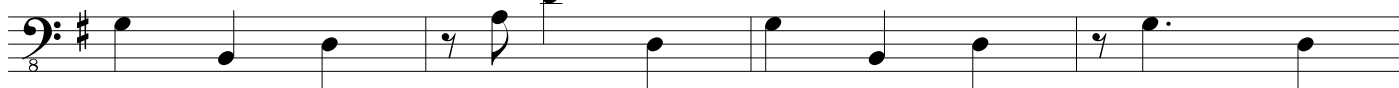
67



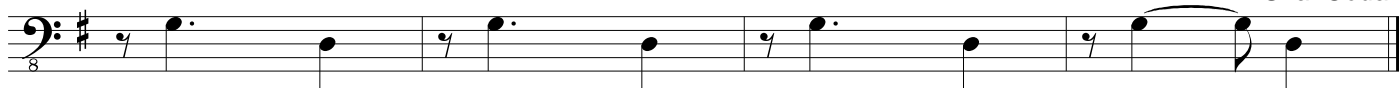
71



75

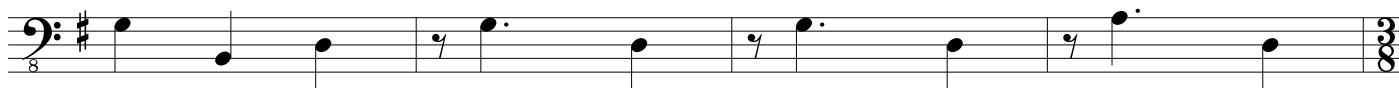


79

*D.S. al Coda*

83

Ø



87



