

Como La Flor

7

[illegible]

13

A musical staff in bass clef with a key signature of one flat (B-flat). The melody consists of the following notes: G2 (half note), A2 (quarter note), G2 (quarter note), F2 (half note), E2 (quarter note), D2 (quarter note), C2 (half note), B1 (quarter note), A1 (quarter note), G1 (half note), F1 (quarter note), E1 (quarter note), D1 (half note), C1 (quarter note), B0 (quarter note), A0 (half note).

19

A musical staff in bass clef with a key signature of one flat (B-flat). The melody consists of the following notes: G2 (half note), A2 (quarter note), B-flat2 (quarter note), A2 (half note), G2 (quarter note), F2 (quarter note), E2 (half note), D2 (quarter note), C2 (half note), B-flat2 (quarter note), A2 (half note), G2 (quarter note), F2 (quarter note), E2 (half note), D2 (quarter note), C2 (half note). The staff is divided into measures by vertical bar lines.

25

A musical staff in bass clef with a key signature of one flat (B-flat). The melody consists of the following notes: G2 (half note), A2 (quarter note), B-flat2 (quarter note), A2 (quarter note), G2 (quarter note), F2 (half note), E2 (half note), D2 (half note), C2 (half note), B-flat2 (quarter note), A2 (quarter note), G2 (quarter note), F2 (half note), E2 (half note), D2 (half note), C2 (half note).

31

The musical notation for the bass staff shows a sequence of notes and rests across 12 measures. The notes are G2, F2, E2, D2, C2, B1, A1, G1, F1, E1, D1, and C1. There are rests in measures 2, 4, 6, 8, and 10. The final measure contains a whole note C1 with a fermata.

37

[illegible]

44

[illegible]

50

The musical notation for the bass staff shows a sequence of notes and rests across ten measures. The notes are: G2 (half), A2 (quarter), B2 (quarter), C3 (half), D3 (half), E3 (half), F3 (half), G3 (half), A3 (half), and B3 (half). There are rests in measures 1, 3, 5, 7, 9, and 10.

56

The bass line of 'The Rose Tree' is written in 2/4 time on a single staff. It begins with a G2 whole note, followed by a half rest. The next measure contains a half note G2 and a quarter note A2. This is followed by a half rest, then a half note G2 and a quarter note A2. The pattern continues with a half rest, then a half note G2 and a quarter note A2, and finally a half note G2 and a quarter rest.

2
62

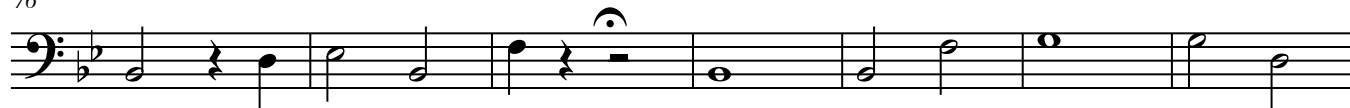
Como La Flor



69



76



83

